

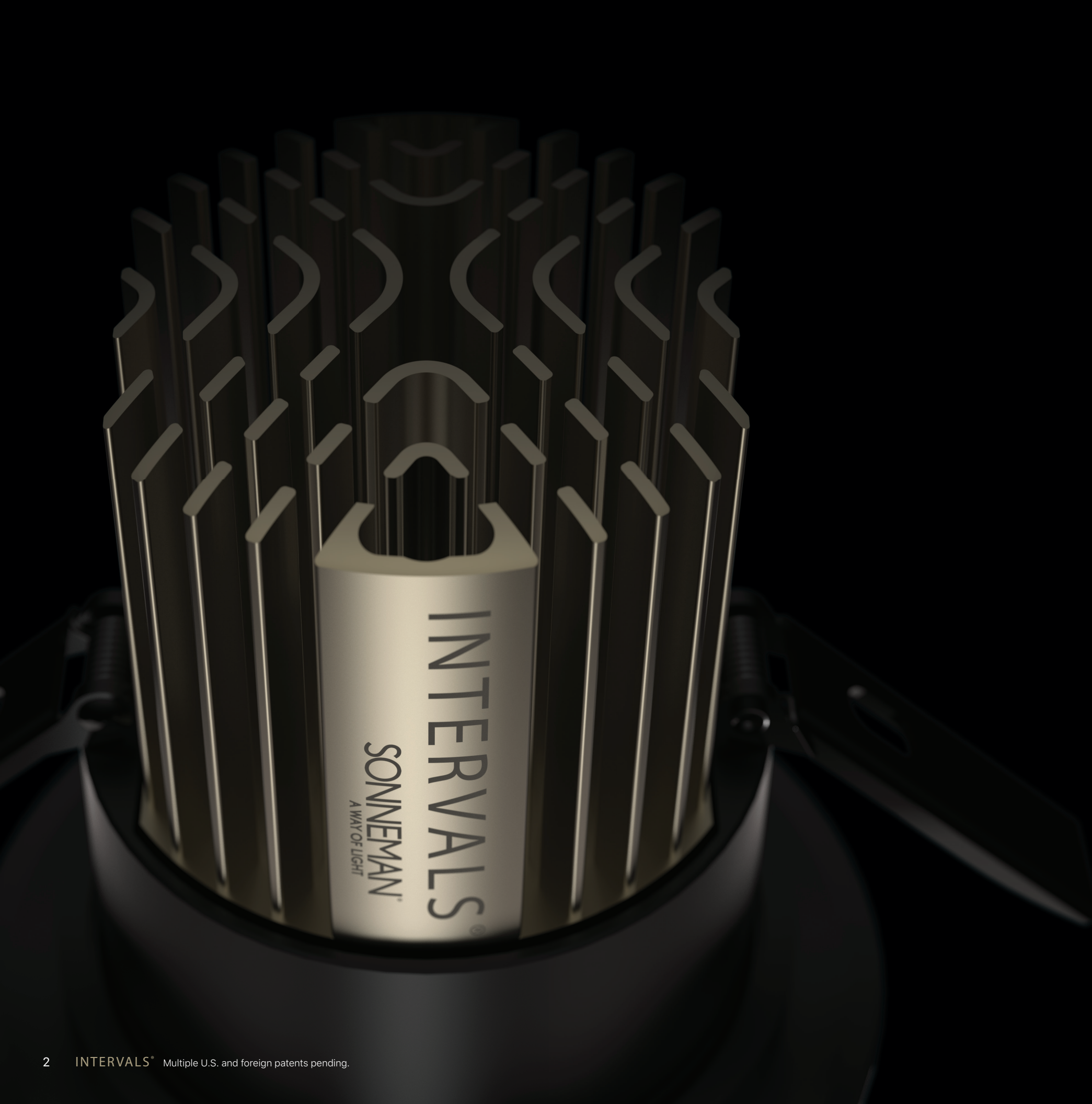
# INTERVALS®

Engineered by Design with the Power to Perform

## RECESSED DOWNLIGHTS



**SONNEMAN®**  
A WAY OF LIGHT



# INTERVALS<sup>®</sup>

Engineered by Design with the Power to Perform

## RECESSED DOWNLIGHTS

INTERVALS Recessed Downlights, engineered by design with the power to perform. An innovation of... *"illumination from the art of technology"* from SONNEMAN – A Way of Light.

This sophisticated lighting system delivers high performance technology from a flexible modular system. It extends and supports our Intervals Linear System to achieve a comprehensive and unified approach to dynamically lighting interior spaces.

Challenged by the opportunity to rethink and reimagine a new approach to recessed downlighting, we sought to encompass the best features and performance possible in a unified, integrated, and modern way. With our extensive knowledge and expertise in LED lighting we built a high output, energy efficient system that provides modularity and flexibility: the light engines work seamlessly with all the trims, ceiling applications, and housings of each size. Installations can be reconfigured in the field to use a different color temperature, power level, trim size, trim shape, trim style, or optic. The result is a flexible modular system that delivers high performance technology in a professional, specification-grade recessed downlighting system.

**Intervals light engines** feature cold-forged aluminum heatsinks that provide optimal thermal performance. The Cree COB light source provides consistent color without multiple shadows, available in five color temperatures. In addition, Intervals can be ordered with warm dimming and tunable white options.

**Intervals trims** are all die cast aluminum and can be used interchangeably with flanged, flangeless mud-in, or flangeless millwork ceiling applications, simplifying ordering and installation. Fixed trims are all inherently airtight, without a housing. Adjustable trims feature continuous 0-40 degree locking tilt, with no steps, and 355 degree locking rotation.

**Intervals optics** are high efficiency hybrid TIR optics, providing a smooth beam pattern with no media or beam softening lens required.





**PRODUCT**  
Intervals® 3" Round Bevel  
Fixed Recessed Downlight  
Satin White

# CONTENTS

03	Introduction to Recessed Downlights
06	Scope of the System
08	1" Fixed
10	2", 3", 4" Fixed
14	Ceiling Applications
16	Decorative Trims
18	2", 3", 4" Adjustable
22	3", 4" Wall Wash
26	Performance
27	Optics
28	Housings
30	Quick Ship Program



RECESSED DOWNLIGHTS

SCOPE OF THE SYSTEM

Intervals high-performance recessed downlights are available in four sizes: 1", 2", 3", and 4", with performance capabilities increasing with scale. The light engines, optics, trims, ceiling applications, and housings are all interchangeable within each size providing unparalleled flexibility in the field. The same sophisticated design and specification-grade performance is available throughout the range, with all sizes offered with multiple round and square trim options in Satin Black, Satin White, and Satin Aluminum trim finishes.

 Fixed  Adjustable  Wall Wash



2" ADJUSTABLE



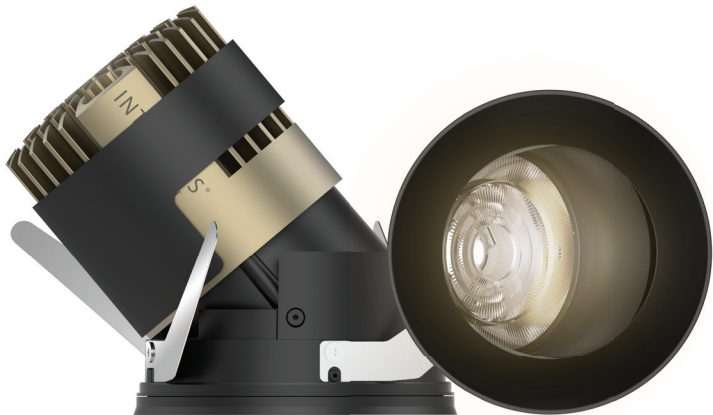
3" WALL WASH



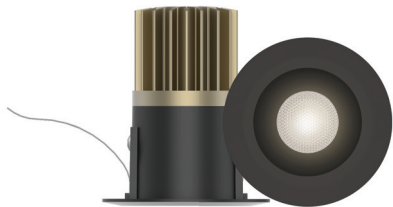
4" WALL WASH



3" ADJUSTABLE



4" ADJUSTABLE



1" LOW-VOLTAGE FIXED



2" FIXED



3" FIXED



4" FIXED

Offering the smallest possible aperture, the 1" fixed downlight is built as a low-voltage system, with multiple downlights powered by a remote 24V power supply. Available in four static white color temperatures and three beam angles.



Offering high-performance in a minimal aperture, the 2" downlight is available in fixed and adjustable versions, with five static white color temperatures and a warm dimming option. Optics available in four beam angles. Also available with below-the-ceiling decorative trim accessories, for use alone or coordinating with an Intervals Suspended Beam installation.



Offering the optimal balance of size and performance, the 3" downlight is available in fixed, adjustable, and wall wash versions, with five static white color temperatures, a warm dimming, and a tunable white option. Optics available in four beam angles. Also available with below-the-ceiling decorative trim accessories, for use alone or coordinating with an Intervals Suspended Beam installation.



Offering maximum performance for commercial and high-ceilinged spaces, the 4" downlight is available in fixed, adjustable, and wall wash versions, with five static white color temperatures, a warm dimming, and a tunable white option. Optics available in four beam angles.





RECESSED DOWNLIGHTS

1" LOW-VOLTAGE FIXED

REMOTE ONLY

Designed and built for a modern approach to precise illumination from a minimal presence this 1" diameter recessed luminaire delivers efficient illumination and optimal performance in a compact size. Static white light engines are powered by Cree SMD technology, with 2-step MacAdam ellipse color binning for consistent color. Illumination without multiple shadows is produced from the single LED light source, available in four color temperatures. The diecast aluminum trim makes the 1" downlight Inherent IC and airtight rated, with no extra housing required.



SPECIFICATIONS	
<b>COLOR TEMPERATURE</b> All-fixed CCT - Min. 90CRI	4000K / 3500K / 3000K / 2700K
<b>OPTICS</b> Field-Changeable	Narrow Spot / Medium Spot / Wide Spot
<b>DELIVERED LUMENS</b>	380Lm
<b>WATTS</b>	6W each (up to either 3 or 10 fixtures per power supply - available, sold separately)
<b>INPUT VOLTAGE</b>	24V w/ remote power supply (available, sold separately)
<b>DIMMING</b>	Dimmable with dimming power supply (available, sold separately)
<b>TRIM FINISHES</b>	● Satin Black   ● Satin Aluminum   ○ Satin White
<b>TRIM OPTIONS</b>	Round Bevel / Round Pinhole / Square Bevel / Square Pinhole
<b>CEILING APPLICATION</b> 0.5"-1.5" ceiling thickness	Flanged
<b>STANDARDS</b>	ETL / Title 24 JA8
<b>RATINGS</b>	Wet Location / Inherent IC / Airtight
<b>LED LIFETIME</b>	50,000 hrs to L70
<b>WARRANTY</b>	5 Years

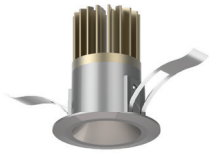


For up-to-date cutsheets with complete specifications and ordering information, visit [www.sonnemanawayoflight.com](http://www.sonnemanawayoflight.com).

AVAILABLE TRIM FINISHES



Satin Black



Satin Aluminum



Satin White

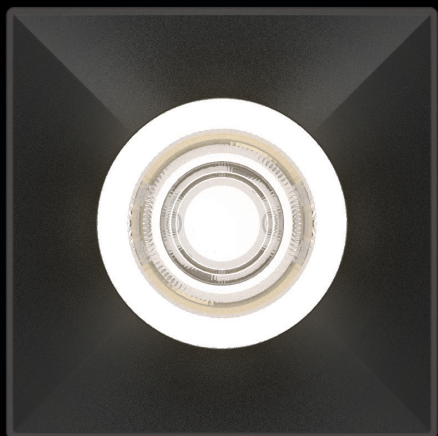


**PRODUCT**  
Intervals® 1" Square Bevel  
Fixed Recessed Downlight  
in Satin White

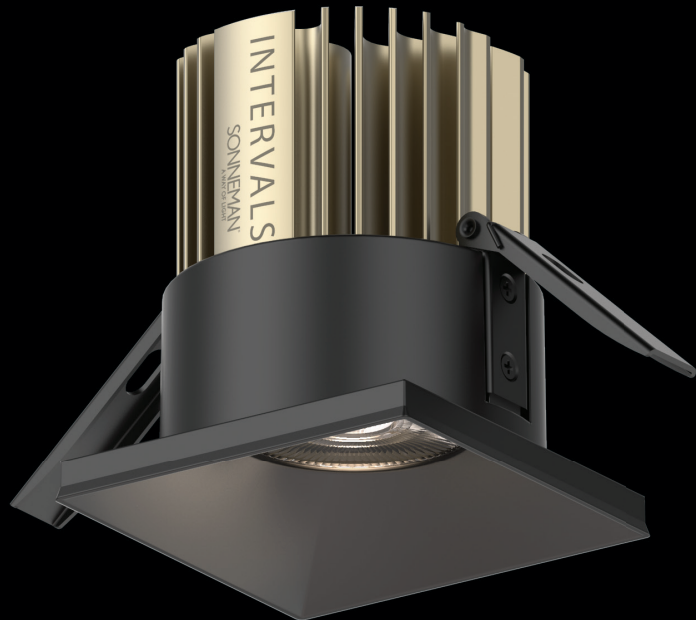
**SONNEMAN**  
A WAY OF LIGHT



RECESSED DOWNLIGHTS  
2", 3", 4" FIXED



Round Bevel Trim  
Satin Black



Square Bevel Trim  
Satin Black

Intervals brings advanced technology, modularity, and flexibility to a superbly crafted high performing system of recessed downlighting. The fixed downlight configurations feature a patent pending spring-loaded connection between the light engine and trim, providing a seamless fit between the optic and trim aperture for optimal energy efficiency and light output. Imagined, designed, and engineered as a unified integration of precision components that fit and work together seamlessly, the Intervals recessed system delivers on its promise of performance.



**PRODUCT**  
Intervals® 3" Round Deep Bevel  
Fixed Recessed Downlight  
in low-glare Satin Black finish

**SONNEMAN**  
A WAY OF LIGHT



RECESSED DOWNLIGHTS

2", 3", 4" FIXED



MODULARITY + CONFIGURABILITY



Within each size, every light engine integrates with any of the trims, and every trim works with all the ceiling flange and housing options. Installations can be reconfigured on-site to use a different power level, size, or shape right up to the final ceiling installation, and a different color temperature, optic, trim style, ceiling applications, or finish even after the ceiling is installed.



RECESSED DOWNLIGHTS

2", 3", 4" FIXED



SPECIFICATIONS			
SIZE	2"	3"	4"
<b>COLOR TEMPERATURE</b> All-fixed CCT - Min. 90CRI *Min. 80CRI	4000K / 3500K / 3000K 2700K / 2200K	4000K / 3500K / 3000K 2700K / *2200K	4000K / 3500K / 3000K 2700K / *2200K
<b>OPTICS</b> Field-Changeable	Narrow Spot / Medium Spot Wide Spot / Flood	Narrow Spot / Medium Spot Wide Spot / Flood	Narrow Spot / Medium Spot Wide Spot / Flood
<b>DELIVERED LUMENS</b>	1100Lm	1650Lm	2440Lm
<b>WATTS</b>	16W	20W	29W
<b>INPUT VOLTAGE</b>	120/277VAC	120/277VAC	120/277VAC
<b>DIMMING</b> Additional dimming protocols available for special order	Phase @120V, 0-10V @120/277V	Phase @120V, 0-10V @120/277V	Phase @120V, 0-10V @120/277V
<b>WARM DIMMING</b>	3000-1800K (1200Lm initial, 14.5W @3000K)	3000-1800K (1200Lm initial, 14.5W @3000K)	3000-1650K (2100Lm initial, 28W @3000K)
<b>TUNABLE WHITE</b>	N/A	5700-2700K (1350Lm initial, 20W @3000K)	5700-2700K (2050Lm initial, 27.5W @3000K)
<b>OPTICAL ACCESSORIES</b> Choose Up to Two	Honeycomb Louver Clear Glass Lens Microprism Lens Linear Spread Lens	Honeycomb Louver Clear Glass Lens Microprism Lens Linear Spread Lens	Honeycomb Louver Clear Glass Lens Microprism Lens Linear Spread Lens
<b>TRIM FINISHES</b>	● Satin Black    ● Satin Aluminum ○ Satin White	● Satin Black    ● Satin Aluminum ○ Satin White	● Satin Black    ● Satin Aluminum ○ Satin White
<b>TRIM OPTIONS</b> Fixed only	Round Bevel Round Pinhole Round Decorative Square Bevel Square Pinhole	Round Bevel Round Deep Bevel Round Pinhole Round Deep Pinhole Round Decorative Square Bevel Square Deep Bevel Square Pinhole Square Deep Pinhole	Round Bevel Round Pinhole Square Bevel Square Pinhole
<b>CEILING APPLICATIONS</b> 0.5"-1.5" ceiling thickness	Flanged / Flangeless Mud-in / Flangeless Millwork	Flanged / Flangeless Mud-In / Flangeless Millwork	Flanged / Flangeless Mud-In / Flangeless Millwork
<b>STANDARDS</b>	ETL / Energy Star / Title 24 JA8		
<b>RATINGS</b>	Damp Location (Wet Location when used with ceiling flange and optional shower gasket) / Airtight		
<b>LED LIFETIME</b>	50,000 hrs to L70		
<b>WARRANTY</b>	5 Years		



For up-to-date cutsheets with complete specifications and ordering information, visit [www.sonnenmanawayoflight.com](http://www.sonnenmanawayoflight.com).



RECESSED DOWNLIGHTS

CEILING APPLICATIONS

All three ceiling applications are made of die cast aluminum and work with any of the trim options.



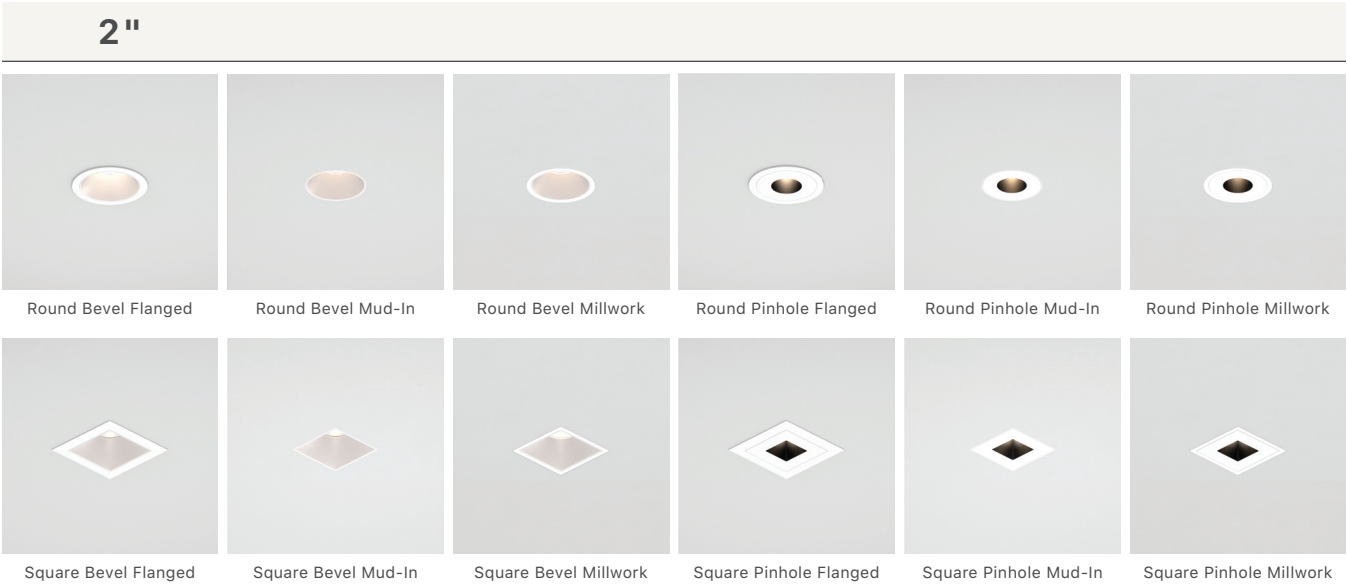
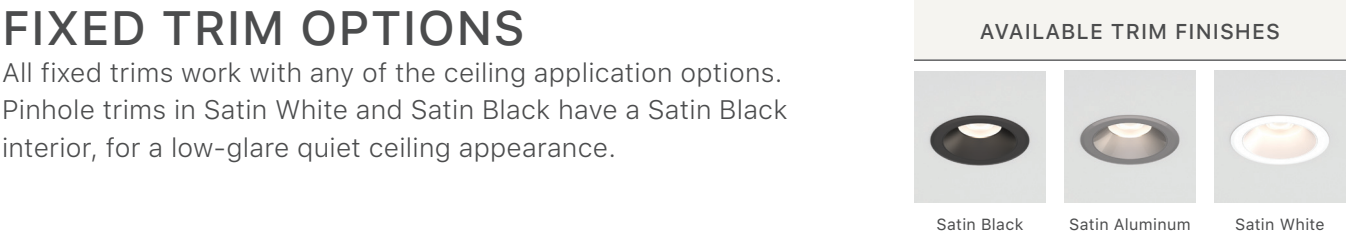
**Flanged:** The minimal ceiling flange with a tapered Feather-Edge™ profile provides a universal solution for all ceiling types. Available in trim-coordinating finishes of Satin Black, Satin Aluminum, and field-paintable Satin White.

**Mud-In:** The flangeless mud-In plate securely attaches to the housing, providing a flush and seamless appearance in gypsum and plaster ceilings with no warping or cracking. Available in field-paintable Satin White finish.

**Millwork:** The millwork collar provides a flangeless appearance in wood or stone ceilings. Available in field-paintable Satin White finish.

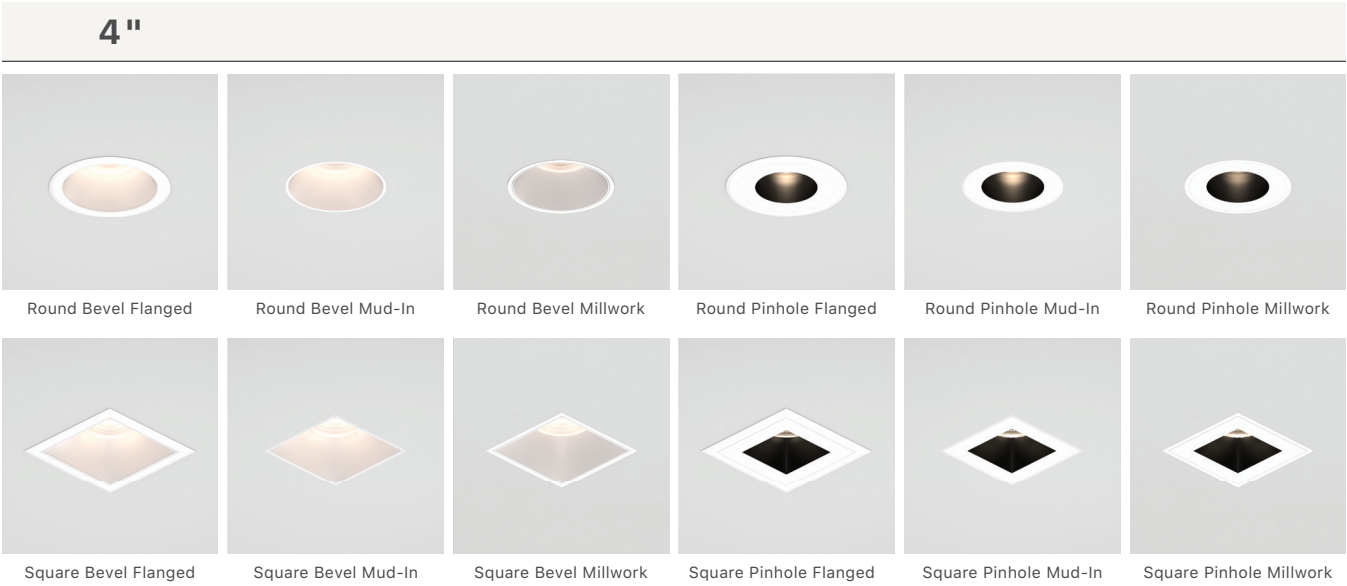
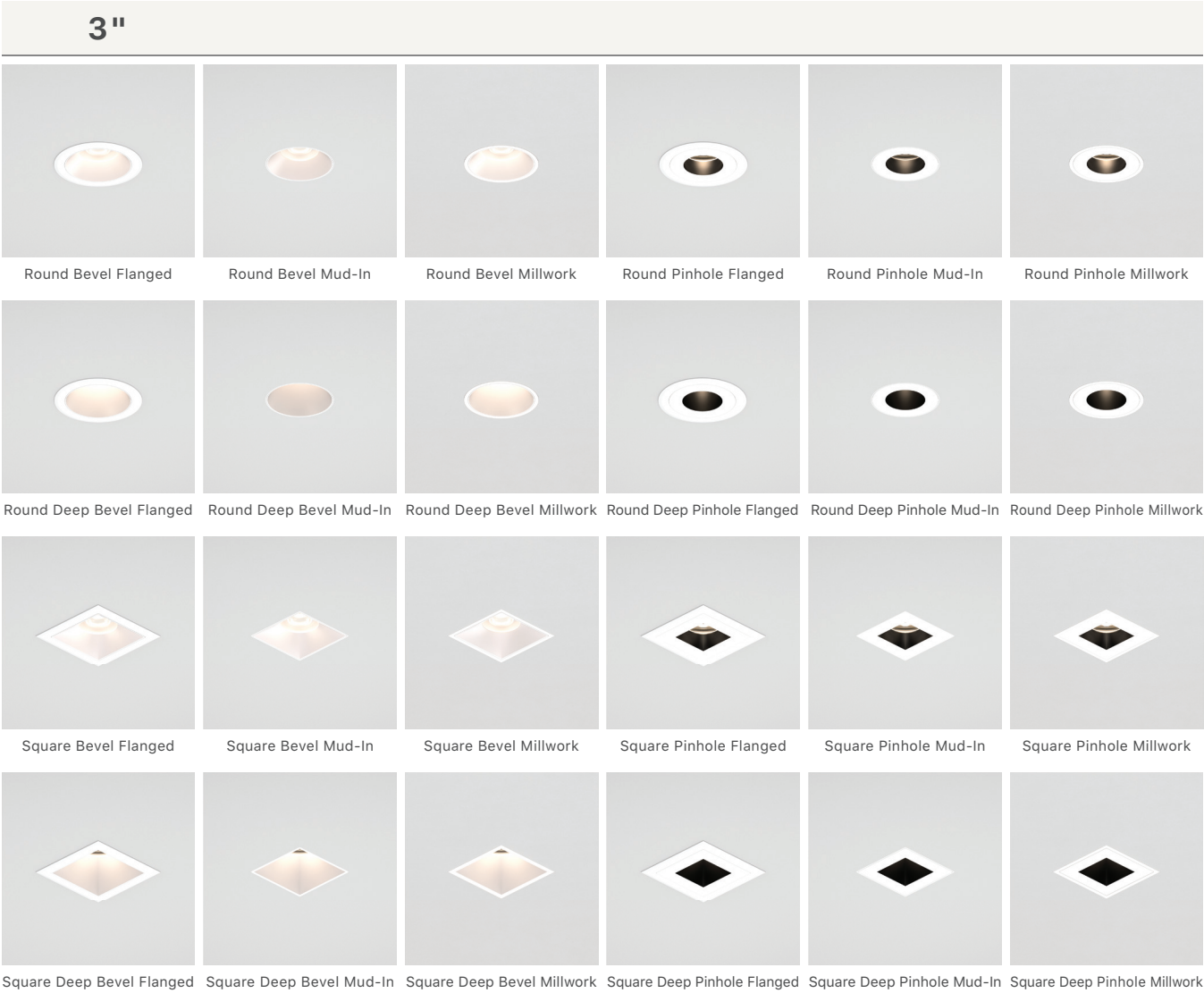
FIXED TRIM OPTIONS

All fixed trims work with any of the ceiling application options. Pinhole trims in Satin White and Satin Black have a Satin Black interior, for a low-glare quiet ceiling appearance.



RECESSED DOWNLIGHTS

FIXED TRIM OPTIONS







**PRODUCT**  
Intervals® 3" Round Decorative Trim  
Recessed Downlight w/ Etched Glass Cylinder  
Satin Black

**PRODUCT**  
Shown above table: Intervals 8' Linear  
Suspended Beam in 24" Spacing, w/Etched  
Glass Cylinder Uplight and Downlight Trims  
Satin Black  
For more information, visit [www.sonnemanawayoflight.com](http://www.sonnemanawayoflight.com).

DECORATIVE TRIMS AVAILABLE CEILING APPLICATIONS			DECORATIVE TRIMS AVAILABLE TRIM FINISHES		
					
Flanged	Mud-In	Millwork	Satin Black	Satin Aluminum	Satin White

## RECESSED DOWNLIGHTS DECORATIVE TRIMS



Add excitement and dramatic impact to a ceiling with interchangeable glass or acrylic trim options that extend decorative lighting below the ceiling. Available for the 2" and 3" round recessed downlight sizes, these accessories extend and coordinate with the Intervals Suspended Beam Linear System. For more information, see [sonnemanawayoflight.com](http://sonnemanawayoflight.com).

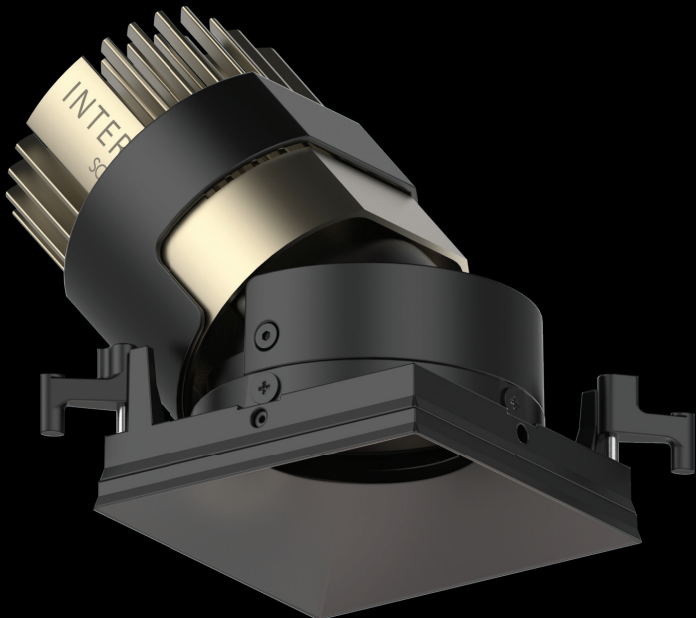
2"			
			
Round Decorative Trim w/ Etched Acrylic Ring	Round Decorative Trim w/ Etched Glass Cylinder	Round Decorative Trim w/ Etched Ribbon Glass	Round Decorative Trim w/ Clear Ribbon Glass
3"			
			
Round Decorative Trim w/ Etched Acrylic Ring	Round Decorative Trim w/ Etched Glass Cylinder	Round Decorative Trim w/ Etched Ribbon Glass	Round Decorative Trim w/ Clear Ribbon Glass



RECESSED DOWNLIGHTS  
2", 3", 4" ADJUSTABLE

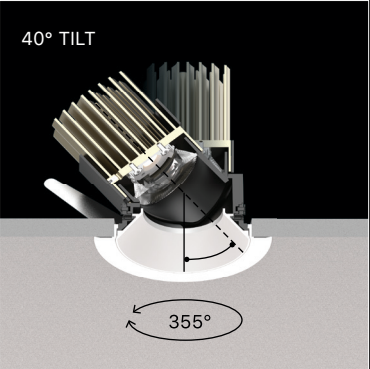


Round Bevel Trim  
Satin Black



Square Bevel Trim  
Satin Black

Intervals adjustable recessed downlights, with 40 degrees of continuous, step-free tilt and a full 355 degrees of rotational aiming, direct light towards the target with precision and retain their desired position. Available in 2", 3", and 4" sizes with the same full range of color temperatures, optics, and ceiling applications as the fixed versions, the adjustable luminaires provide the high quality directional illumination desired for lighting artwork or creating dramatic impact within a space.



**PRODUCT**  
Intervals® 3" Round  
Adjustable Recessed Downlight  
Satin White



RECESSED DOWNLIGHTS

2", 3", 4" ADJUSTABLE



MODULARITY + CONFIGURABILITY

**Light Engine**

Field-replaceable cold forged aluminum heat sink provides excellent thermal performance in a compact size.

**LED**

Cree LED with high quality color rendering available in 5 color temperatures.

**Optics**

Field-changeable smooth beam TIR optics offered in 4 beam angles.

**Optical Accessories**

Up to two optical accessories can be used without any extra holder to further refine lighting effects.

**Sliding Shade**

The patent pending sliding shade design eliminates line-of-sight into the ceiling cavity or housing, regardless of tilt angle.

**Installation**

Round adjustable trims feature stainless steel spring wings that allow for tool-free installation into any position and easy twist-out removal for in-field servicing. Square adjustable trims feature swing-out screw clamps. Both are suitable for installation in ceiling thickness from 0.5" to 1.5".

**Flange Ring**

Die cast aluminum ceiling flange with tapered Feather Edge™, field-changeable to flangeless mud-in or millwork.

**Trim Cover**

The die cast aluminum trim cover is secured with ball catches and provides a beveled appearance in the desired finish, and is removable for adjusting the aiming.

RECESSED DOWNLIGHTS

2", 3", 4" ADJUSTABLE



SPECIFICATIONS

SIZE	2"	3"	4"
<b>COLOR TEMPERATURE</b> All-fixed CCT - Min. 90CRI *Min. 80CRI	4000K / 3500K / 3000K 2700K / 2200K	4000K / 3500K / 3000K 2700K / *2200K	4000K / 3500K / 3000K 2700K / *2200K
<b>OPTICS</b> Field-Changeable	Narrow Spot / Medium Spot Wide Spot / Flood	Narrow Spot / Medium Spot Wide Spot / Flood	Narrow Spot / Medium Spot Wide Spot / Flood
<b>DELIVERED LUMENS</b>	1100Lm	1650Lm	2440Lm
<b>WATTS</b>	16W	20W	29W
<b>INPUT VOLTAGE</b>	120/277VAC	120/277VAC	120/277VAC
<b>DIMMING</b> Additional dimming protocols available for special order	Phase @120V, 0-10V @120/277V	Phase @120V, 0-10V @120/277V	Phase @120V, 0-10V @120/277V
<b>WARM DIMMING</b>	3000-1800K (1200Lm initial, 14.5W @3000K)	3000-1800K (1200Lm initial, 14.5W @3000K)	3000-1650K (2100Lm initial, 28W @3000K)
<b>TUNABLE WHITE</b>	N/A	5700-2700K (1350Lm initial, 20W @3000K)	5700-2700K (2050Lm initial, 27.5W @3000K)
<b>OPTICAL ACCESSORIES</b> Choose Up To Two	Honeycomb Louver Clear Glass Lens Microprism Lens Linear Spread Lens	Honeycomb Louver Clear Glass Lens Microprism Lens Linear Spread Lens	Honeycomb Louver Clear Glass Lens Microprism Lens Linear Spread Lens
<b>TRIM FINISHES</b>	● Satin Black ● Satin Aluminum ○ Satin White	● Satin Black ● Satin Aluminum ○ Satin White	● Satin Black ● Satin Aluminum ○ Satin White
<b>TRIM OPTIONS</b>	Round Bevel / Square Bevel	Round Bevel / Square Bevel	Round Bevel / Square Bevel
<b>CEILING APPLICATIONS</b> 0.5"-1.5" ceiling thickness	Flanged / Flangeless Mud-In / Flangeless Millwork	Flanged / Flangeless Mud-In / Flangeless Millwork	Flanged / Flangeless Mud-In / Flangeless Millwork
<b>STANDARDS</b>	ETL / Title 24 JA8 / Energy Star		
<b>RATINGS</b>	Damp Location		
<b>LED LIFETIME</b>	50,000 hrs to L70		
<b>WARRANTY</b>	5 Years		

AVAILABLE CEILING APPLICATIONS

Flanged      Mud-In      Millwork

AVAILABLE TRIM FINISHES

Satin Black      Satin Aluminum      Satin White



For up-to-date cutsheets with complete specifications and ordering information, visit [www.sonnemanawayoflight.com](http://www.sonnemanawayoflight.com).



# RECESSED DOWNLIGHTS 3", 4" WALL WASH



Round Wall Wash Trim  
Satin Black

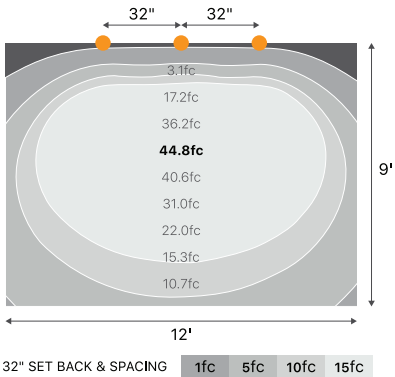


Square Wall Wash Trim  
Satin Black

The Intervals wall wash downlight features a dedicated asymmetric wall wash optic, bathing a vertical surface with exceptionally even illumination from ceiling to floor, without scalloping or shadows. Intervals wall wash luminaires are available in 3" and 4" sizes.



**PRODUCT**  
Intervals® 3" Square  
Wall Wash Recessed Downlight  
Satin White



32" SET BACK & SPACING    1fc   5fc   10fc   15fc

The generous horizontal spread of the Intervals wall wash allows for smooth and even lighting without the need for close spacing of the units. Maximum luminosity is achieved with at least three units, when used in a 1:1 ratio for setback to on-center spacing. On a 9' ceiling, 32" setback will set the maximum foot candles on the wall at eye-level, as shown here.



RECESSED DOWNLIGHTS

3", 4" WALL WASH



MODULARITY + CONFIGURABILITY

**Optics**

Dedicated asymmetric wall wash optic for optimum distribution along the wall.

**Light Engine**

Field-replaceable cold forged aluminum heat sink provides excellent thermal performance in a compact size.

**LED**

Cree LED with high quality color rendering available in 5 color temperatures.

**Optical Accessories**

The wall wash trim includes a microprism lens accessory for smooth and even light distribution along the wall.

**Installation**

Electro-coated steel spring wings allow for tool-free installation and in-field servicing in ceiling thickness from 0.5" to 1.5".

**Trims**

Die cast aluminum trim with patent pending connection to the light engine provide inherently airtight fixtures with high efficiency.

**Flange Ring**

Die cast aluminum ceiling flange with tapered Feather Edge™, field-changeable to flangeless mud-in or millwork.



RECESSED DOWNLIGHTS

3", 4" WALL WASH

SPECIFICATIONS		
SIZE	3"	4"
<b>COLOR TEMPERATURE</b> All-fixed CCT - Min. 90CRI *Min. 80CRI	4000K / 3500K / 3000K / 2700K / *2200K	4000K / 3500K / 3000K / 2700K / *2200K
<b>OPTICS</b> Field-Changeable	Asymmetric Wall Wash	Asymmetric Wall Wash
<b>DELIVERED LUMENS</b>	1230Lm	1725Lm
<b>WATTS</b>	20W	29W
<b>INPUT VOLTAGE</b>	120/277VAC	120/277VAC
<b>DIMMING</b> Additional dimming protocols available for special order	Phase @120V, 0-10V @120/277V	Phase @120V, 0-10V @120/277V
<b>WARM DIMMING</b>	3000-1800K (1200Lm initial, 14.5W @3000K)	3000-1650K (2100Lm initial, 28W @3000K)
<b>TUNABLE WHITE</b>	5700K-2700K (1350Lm initial, 20W @3000K)	5700K-2700K (2050Lm initial, 27.5W @3000K)
<b>OPTICAL ACCESSORIES</b>	Microprism lens included	Microprism lens included
<b>TRIM FINISHES</b>	● Satin Black ● Satin Aluminum ○ Satin White	● Satin Black ● Satin Aluminum ○ Satin White
<b>CEILING APPLICATIONS</b> 0.5"-1.5" ceiling thickness	Flanged / Flangeless Mud-In / Flangeless Millwork	Flanged / Flangeless Mud-In / Flangeless Millwork
<b>STANDARDS</b>	ETL / Title 24 JA8 / Energy Star	
<b>RATINGS</b>	Damp Location (Wet Location when used with ceiling flange and optional shower gasket) / Airtight	
<b>LED LIFETIME</b>	50,000 hrs to L70	
<b>WARRANTY</b>	5 Years	

AVAILABLE CEILING APPLICATIONS

Flanged

Mud-In

Millwork

AVAILABLE TRIM FINISHES

Satin Black

Satin Aluminum

Satin White

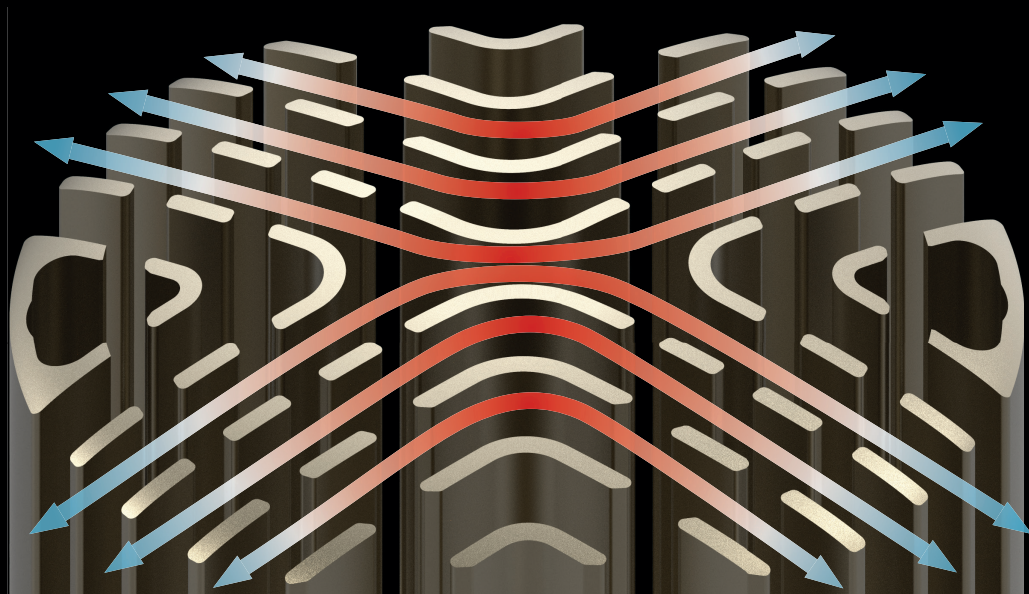


For up-to-date cutsheets with complete specifications and ordering information, visit [www.sonnemanawayoflight.com](http://www.sonnemanawayoflight.com).



RECESSED DOWNLIGHTS  
PERFORMANCE

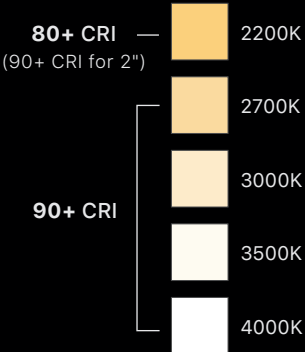
Designed for optimal thermal performance.



Light Engine

- Cold forged aluminum heat sink
- Anodized Champagne finish
- Optimal thermal performance
- Compact size
- Static white light engine: powered by Cree COB Technology
- 2-step MacAdam ellipse color binning for consistent color
- Spring-loaded light engine for a sealed fit between optic and trim

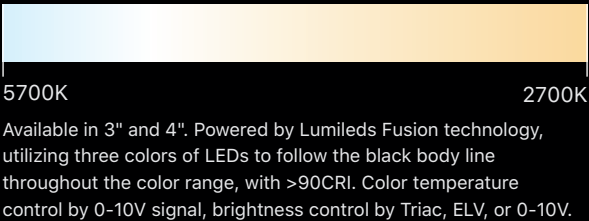
LED COLOR TEMPERATURE  
- 2200K not available in 1"



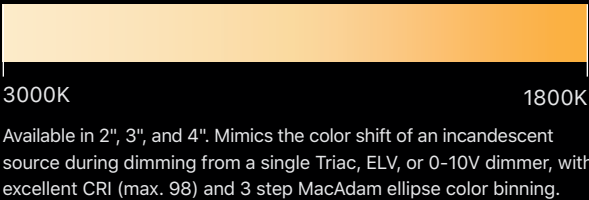
LED Source

- Single LED source
- 4000K, 3500K, 3000K, and 2700K at 90+CRI
- 2200K at 80+CRI (90+CRI for 2")
- Dimming: Forward and Reverse Phase at 120VAC, 0-10V at 120/277VAC
- Warm Dimming (2", 3"): 3000-1800K, and (4"): 3000-1650K
- Tunable White (3", 4"): 5700K - 2700K

TUNABLE WHITE



WARM DIMMING



RECESSED DOWNLIGHTS  
OPTICS



- Field-changeable
- High efficiency TIR optics
- High CBCP
- Smooth beam pattern with no artifacts, and no additional beam softening lens needed.
- Up to two optical accessories can be placed in front of the optic, with no additional holder needed.



Narrow Spot  
(15°-19°)



Medium Spot  
(20°-29°)



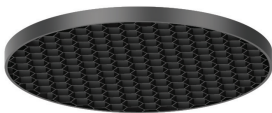
Wide Spot  
(30°-45°)



Flood  
(46°-66°)  
(Available in 2", 3", and 4")

OPTICAL ACCESSORIES

(Fixed and Adjustable, available with 2", 3", and 4")



Honeycomb Louver

Reduces high-angle glare for a quiet ceiling appearance, with minimal impact on the light distribution.



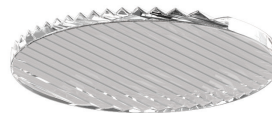
Clear Glass Lens

For use in areas requiring frequent cleaning or contact, to protect the surface of the optic. Included standard with the Honeycomb Louver.



Microprism Lens

For use when additional beam softening is desired. Included standard with the wall wash trim.



Linear Spread Lens

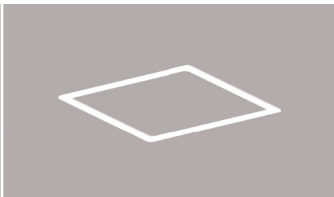
Modifies the standard round beam pattern into an elliptical pattern, ideal for narrow corridors or other linear applications.

ACCESSORIES



Round Shower Gasket

For use with fixed downlights and a flanged ceiling application to achieve a wet location rating.

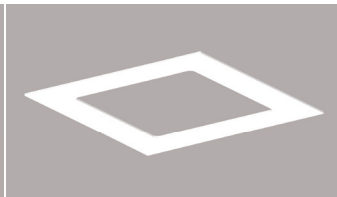


Square Shower Gasket



Round Goof Plate  
(Available in all finishes)

For use on an oversized ceiling hole, up to 1" oversized.

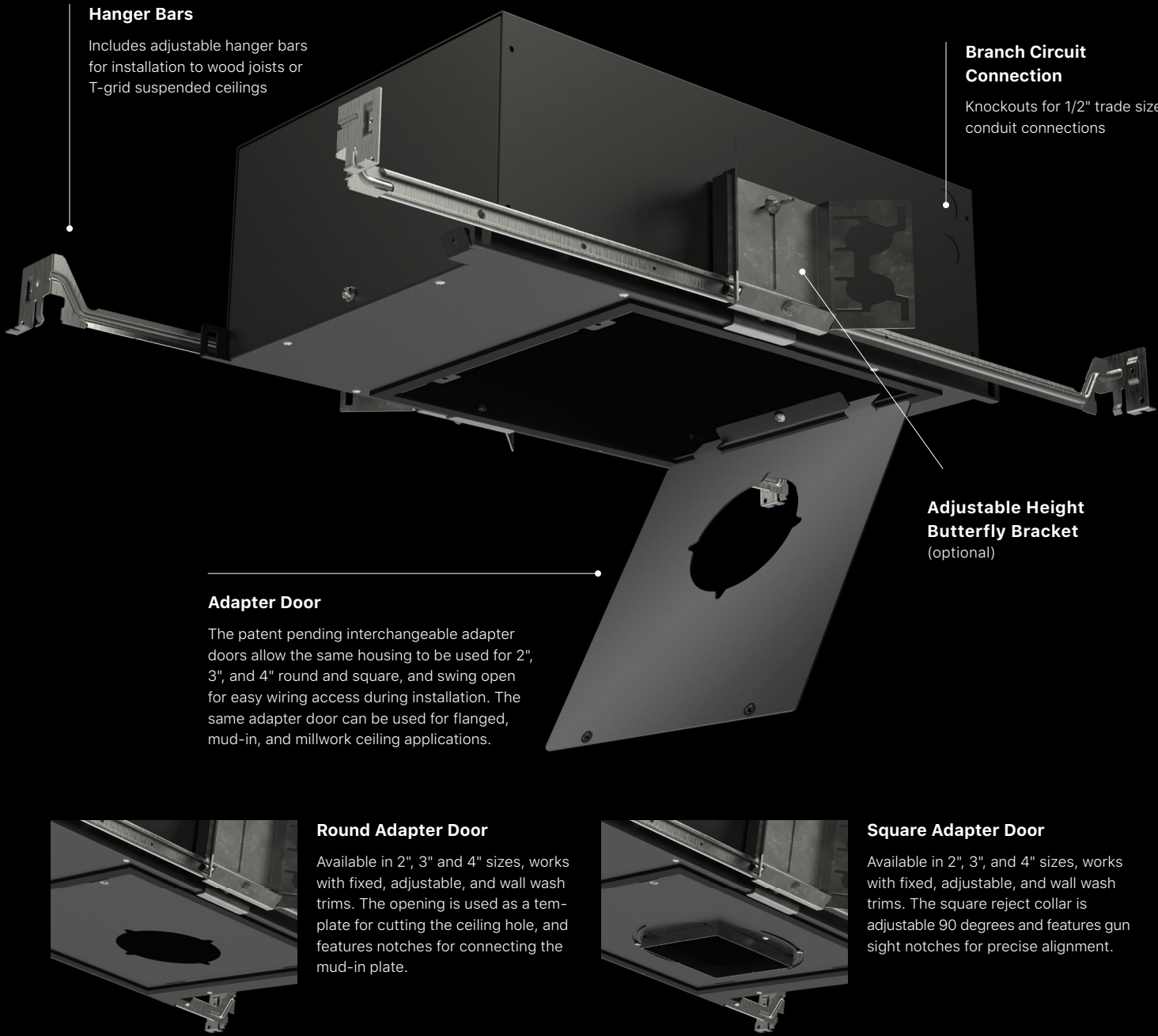


Square Goof Plate  
(Available in all finishes)



# RECESSED DOWNLIGHTS HOUSINGS

The Intervals recessed housings feature innovative features that extend the modular flexibility of Intervals recessed downlights to the rough-in installation sections. The patent pending interchangeable adapter door allows the same New Construction Housing or Pan to be used for any 2", 3", or 4" downlight: round or square, fixed, adjustable, or wall wash, and flanged or flangeless. The large adapter door also swings open for easy branch circuit wiring access during installation. Further, there is no need to order a different item for remodel use – every 2", 3", and 4" fixture comes with the remodel junction box and driver housing – simply add on the Housing or Pan for new construction use. All sizes are accessible and serviceable from below the ceiling after installation, thanks to the flexible and low-profile junction box and driver housing.



# RECESSED DOWNLIGHTS INSTALLATION OVERVIEW

REMODEL

**Specified Downlight Build**

**Driver Housing**

**Non-Insulation Contact Rated for 2", 3", and 4" Installations**

The extruded aluminum remodel junction box and driver housing are used for every 2", 3", and 4" downlight. The junction box features two knockouts for through-wiring of 12AWG conductors and a flexible connection to the driver housing, for easy removal through the ceiling opening for inspection and servicing.

NEW CONSTRUCTION PAN

**New Construction Pan**

**Non-Insulation Contact Rated for 2", 3", and 4" Installations**

The heavy gauge steel construction of the New Construction Pan provides a sturdy and economical installation platform for new construction applications where insulation contact rating is not required. Includes adjustable hanger arms for installation to wood joists or suspended T-grid ceilings, and compatible with the available adjustable height butterfly brackets for mounting with C-channel, EMT, or furring strip.

NEW CONSTRUCTION IC HOUSING

**New Construction IC Housing**

**Insulation Contact Rated for 2", 3", and 4" Installations (up to 25W)**


The New Construction IC Housing features a heavy gauge steel frame and aluminum enclosure for optimal thermal performance and is airtight and Chicago plenum rated. Includes adjustable hanger arms for installation to wood joists or suspended T-grid ceilings, and compatible with the available adjustable height butterfly brackets for mounting with C-channel, EMT, or furring strip.



RECESSED DOWNLIGHTS

QUICK SHIP PROGRAM

SIZE	2"	3"	4"
TRIM (Select 1)	 Round Bevel	 Round Bevel	 Round Bevel
	 Square Bevel	 Square Bevel	 Square Bevel
TRIM FINISH	<input type="radio"/> Satin White	<input type="radio"/> Satin White	<input type="radio"/> Satin White
CEILING APPLICATIONS (Accessories in gray ordered separately)	Flanged	Flanged	Flanged
	Flangeless Mud-In	Flangeless Mud-In	Flangeless Mud-In
	Flangeless Millwork	Flangeless Millwork	Flangeless Millwork
COLOR TEMPERATURE (Select 1)	2700K	2700K	2700K
	3000K	3000K	3000K
	3500K	3500K	3500K
OPTICS (Accessories in gray ordered separately)	Flood	Flood	Flood
	Wide Spot	Wide Spot	Wide Spot
	Medium Spot	Medium Spot	Medium Spot
	Narrow Spot	Narrow Spot	Narrow Spot
HOUSING	New Construction IC Housing (IC Rated)	New Construction IC Housing (IC Rated)	New Construction IC Housing (Non-IC Rated)
POWER	1100Lm 16W 120/277VAC	1650Lm 20W 120/277VAC	2440Lm 29W 120/277VAC
DIMMING	Phase @120V, 0-10V @120/277V    Phase @120V, 0-10V @120/277V    Phase @120V, 0-10V @120/277V		



For up-to-date cutsheets with complete specifications and ordering information, visit [www.sonnemanawayoflight.com](http://www.sonnemanawayoflight.com).



# INTERVALS®

## RECESSED DOWNLIGHTS

### **SONNEMAN – A WAY OF LIGHT**

20 North Avenue  
Larchmont, NY 10538  
P. 914.834.3600

[csr@sonnemanawayoflight.com](mailto:csr@sonnemanawayoflight.com)  
[www.sonnemanawayoflight.com](http://www.sonnemanawayoflight.com)



Copyright ©2021 SONNEMAN – A WAY OF LIGHT

**SONNEMAN®**  
A WAY OF LIGHT